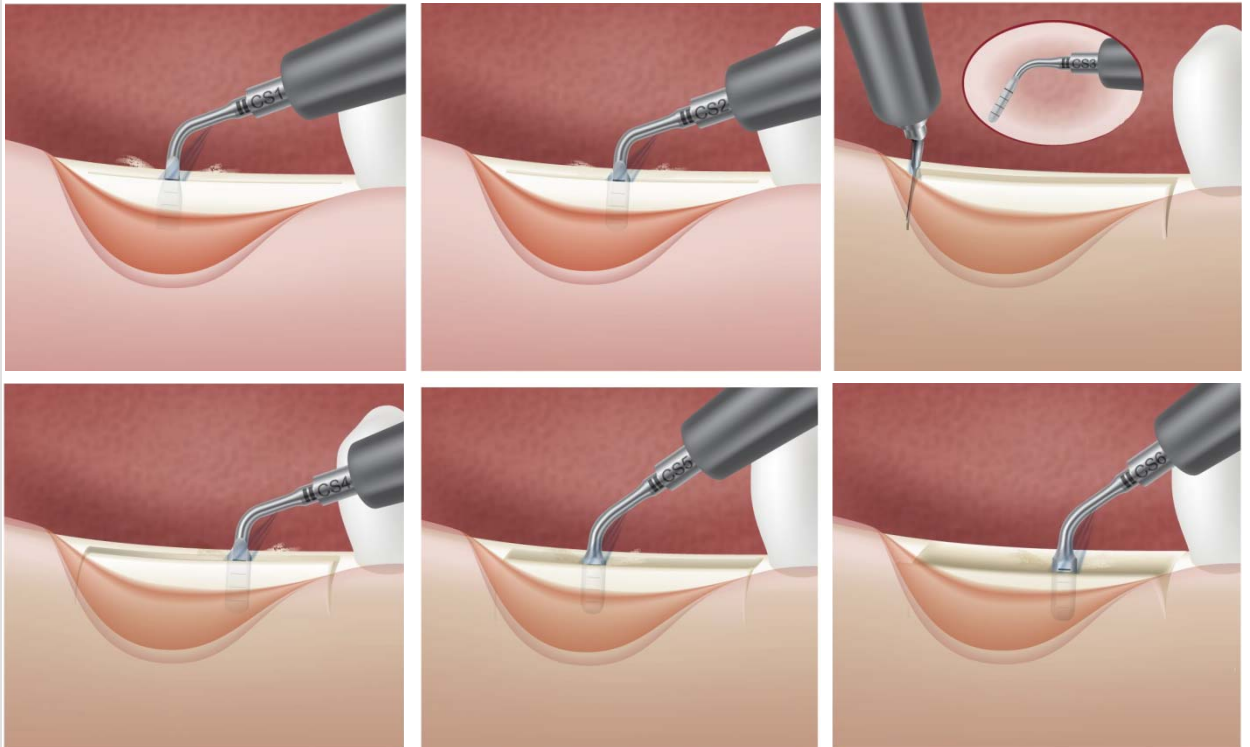


CREST SPLITTING

NEW

Ultrasonics Crest Splitting guideline



1. Perform with a traditional scalpel a single top alveolar crest incision and then use the CS1 ultrasonic tip for a vertical longitudinal pilot osteotomy with a minimum of 7-8mm depth. A laser mark every 2mm gives control over the osteotomy until the minimum depth of 7-8mm is reached.
2. Continue your initial lateral expansion with the CS2 again to a minimum depth of 7- 8mm.
3. Perform the buccal relief osteotomies (discharge osteotomies at mesial and distal end of the longitudinal osteotomy), to a minimum depth of 7-8mm equal to the depth of the longitudinal osteotomy.
4. Start you bone expansion with the CS4 tip. Tip thickness: 1.80mm at 8mm.
5. Continue the enlargement with the CS5 tip. Tip thickness: 2.75mm at 8mm.
6. Finalize the expansion with the CS6 tip. Tip thickness: 3.75mm at 8mm.
7. For a **one step surgery**: Insert the implant(s) and fill gaps with bone graft material and close mucosa with adaptive sutures.
For a **two step surgery**: fill the expanded osteotomy with bone graft material and perform adaptive sutures. Insert the implant(s) after a healing period of 3 to 5 months.



SATELEC
ACTEON