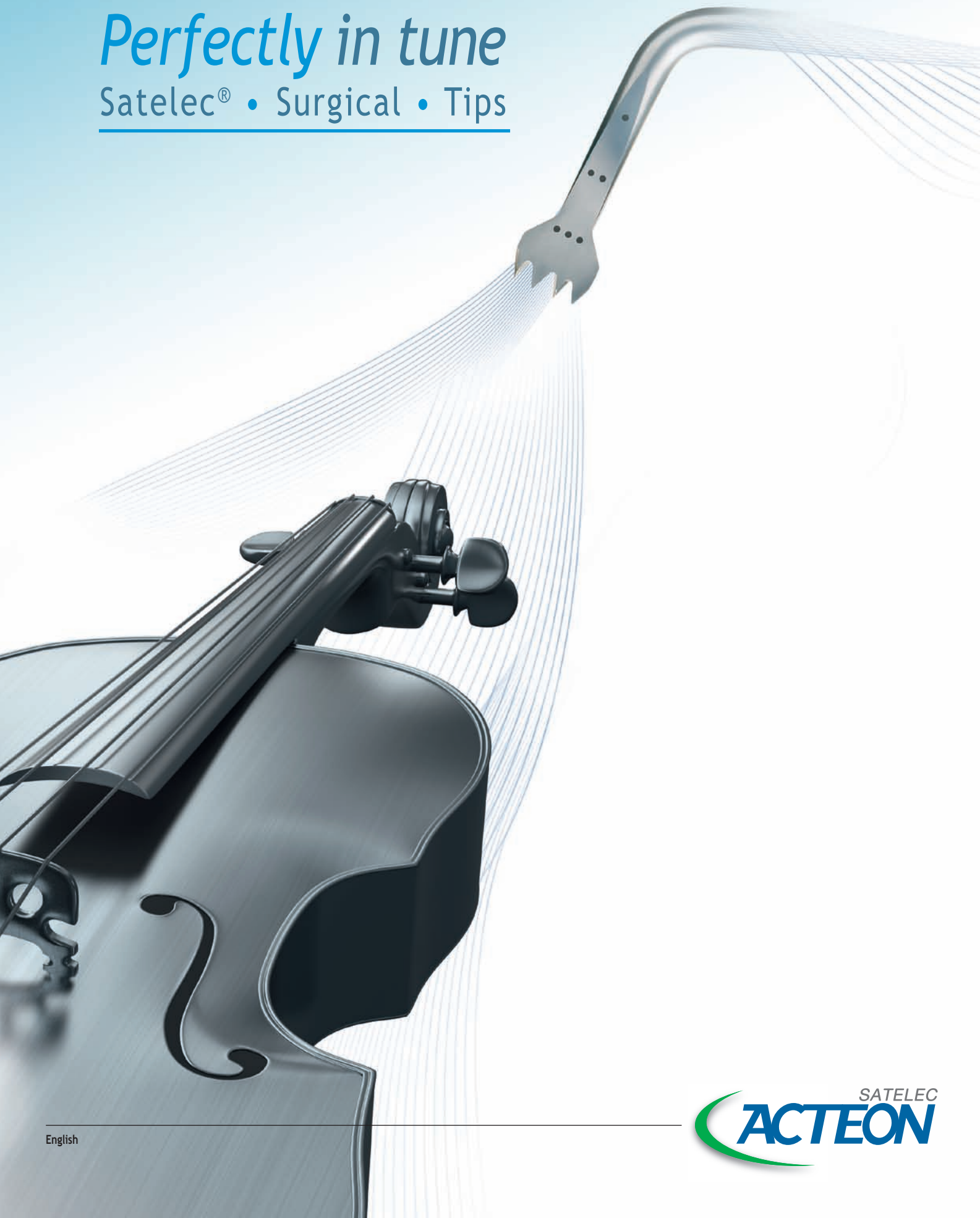


# *Perfectly in tune*

Satelec® • Surgical • Tips





## SATELEC® , World Leader

- Inventor of the piezoelectric technology applied to dentistry,
- Constant R&D investments, in partnership with clinicians, universities and dental experts worldwide,
- Products used daily in more than 100 countries.

## SATELEC tips, proven quality

- Designed using high-tech CAD software,
- Manufactured at the SATELEC headquarters in Mérignac (Bordeaux, France) on high-precision equipment,
- Strengthened by specific heat and surface treatment processes,
- Individually tested to measure its efficiency, spray and acoustic performance.

## Combine robustness and precision

- Selection of high quality alloy for a maximal resistance,
- Control of each tip vibration in accordance with SATELEC handpiece,
- Longevity, robustness and reliability make the reputation of Piezotome®.

IMPORTANT\*: Surgical tips designed for Piezotome and Implant Center cannot be used with Piezotome 2, Piezotome Solo, Implant Center 2 and vice versa.

• Blue Reference:  

• Black Reference:   



\*Generators available depending on commercial offers

# The most complete, efficient and secure range of tips on the market



## OSTEOTOMY/OSTEOPLASTY

Clean and thin cut for maximal bone volume.



## CREST SPLITTING

Rapid and minimally invasive technique for controlled expansion.



## LATERAL SINUS LIFT

Unbeatable comfort: selective and haemostatic cut.



## SYNDESMOTOMY

For maximum bone preservation.



## CRESTAL SINUS LIFT

Minimally invasive surgery for smooth sinus floor fracture.



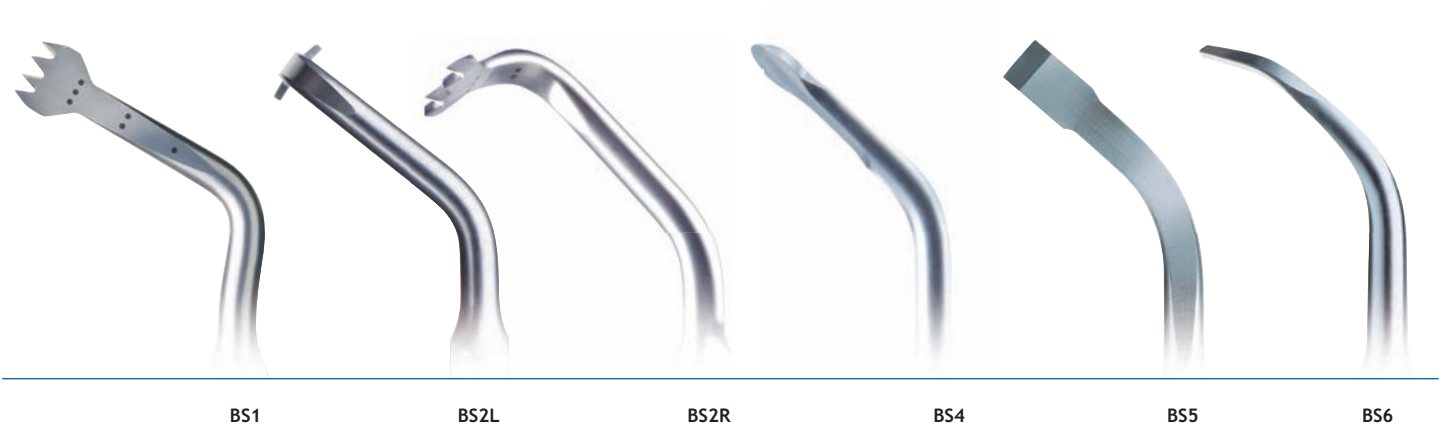
## CROWN EXTENSION

Incomparable precision and accessibility.



Power and ultrasonic frequency are managed automatically and in real time (SATELEC® patent) for :

- an efficient and constant cut on all types of bone and any depth of cut,
- greater regularity and precision,
- a smooth and effortless gesture.



BS1

BS2L

BS2R

BS4

BS5

BS6

## Thinness & Security

# Bone Surgery Kit: Osteotomy; Osteoplasty

### PERFORMING BONE GRAFT,

allows cutting, excising and remodeling bone structures without any risk of soft tissue lesions.

BS1, BS1 Slim, BS1 Long,  
BS2L, BS2R, BS4, BS5, BS6

#### BS Kit:

Ref. [F87309](#)/F87509

#### BS Pack:

Ref. [F87300](#)/F87500

### BONE HARVESTING

BS1 Slim - Ref. [F87525](#)

9 mm saw intended for the in-depth cutting of very dense cortical bones.

BS1 Long - Ref. [F87527](#)

15 mm saw facilitating ramus bone grafting.

BS2L - Ref. [F87302](#)/F87502

Left-oriented bone saw used for cutting the ramus cortical bone.

BS2R - Ref. [F87303](#)/F87503

Right-oriented bone saw used for cutting the ramus cortical bone.

### OSTEOTOMY

BS1 - Ref. [F87301](#)/F87501

Saw intended for cutting the cortical bone, surgical orthodontics (Piezocision), and bone distraction.

BS5 - Ref. [F87305](#)/F87505

Flat scalpel for fine osteotomies.

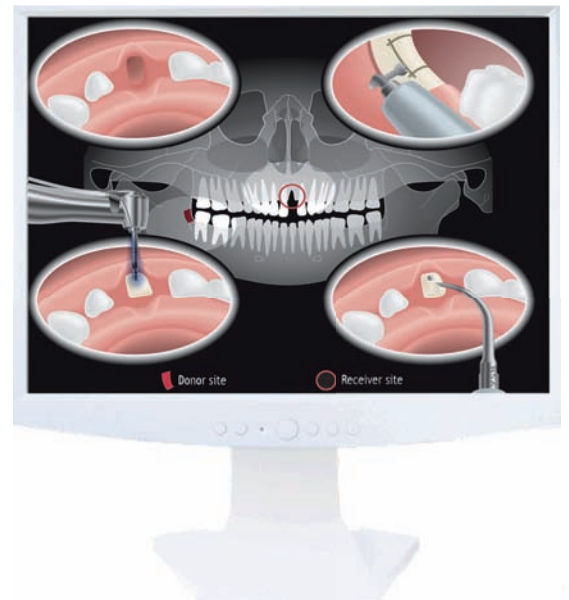
### OSTEOPLASTY

BS4 - Ref. [F87304](#)/F87504

Circular scalpel for osteoplasty and harvesting of bone particles or chips.

BS6 - Ref. [F87306](#)/F87506

Curved scalpel particularly recommended for osteoplasty.





SL1

SL2

SL3

SL4

SL5

**For an unmatched visibility**

## Sinus Lift Kit

### LATERAL SINUS LIFT

A thin cut performed without effort, limiting any risk of sinus membrane perforation or antral artery damage. The elevation is performed by keeping a permanent contact between the membrane and the bone lining.

SL1, SL2, SL3,  
SL4, SL5

SL Kit:  
Ref. F87319/F87519

SL Pack:  
Ref. F87310/F87510

### VESTIBULAR BONE WINDOW CUT

SL1 - Ref. F87311/F87511  
*Diamond-coated tip for vestibular bone window cut and for attenuation of sharp angles.*

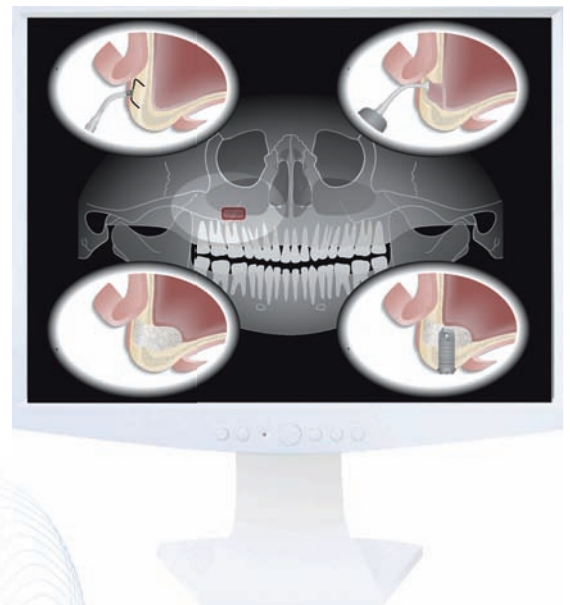
SL2 - Ref. F87312/F87512  
*Diamond-coated ball tip for smoothing the vestibular bone window and precise osteoplasty.*

### MEMBRANE DETACHMENT

SL3 - Ref. F87313/F87513  
*Plateau tip served for Schneiderian membrane elevation on the window's edges.*

SL4 - Ref. F87314/F87514  
*Spatula served for Schneiderian membrane elevation inside the sinus.*

SL5 - Ref. F87315/F87515  
*Spatula used for Schneiderian membrane elevation inside the sinus and for disengagement of anatomical structures.*



**NEW PROTOCOL**



TKW1

TKW2

TKW3

TKW4

TKW5

**Fast, safe  
and minimally  
invasive  
technique**

## IntraLift® Kit

### SINUS LIFT BY THE CRESTAL APPROACH

The IntraLift Kit makes it possible to perform non invasive surgery in full safety.

TKW1, TKW2, TKW3,  
TKW4, TKW5

IntraLift Kit:  
Ref. F87336/F87536

IntraLift Pack:  
Ref. F87330/F87530

### PILOT DRILLING

TKW1 - Ref. F87331/F87531  
Conical and diamond-coated tip for pilot drilling  
in very dense cortical bone ( $\varnothing$  1.35 mm).

### SECONDARY DRILLING

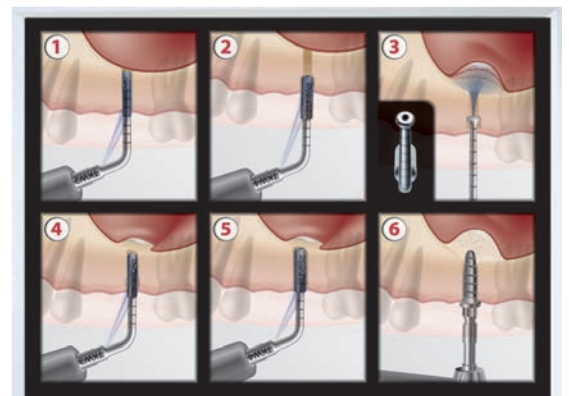
TKW2 - Ref. F87332/F87532  
Cylindrical and diamond-coated tip dedicated for  
drilling and fracturing the sinus floor ( $\varnothing$  2.1 mm).

TKW3 - Ref. F87333/F87533  
Cylindrical tip dedicated to drill and widen the  
access canal to Schneiderian membrane  
( $\varnothing$  2.35 mm).

TKW4 - Ref. F87334/F87534  
Cylindrical and diamond-coated tip intended  
for the receptacle preparation and widening  
the access canal to the Schneiderian membrane  
( $\varnothing$  2.8 mm).

### MEMBRANE ELEVATION

TKW5 - Ref. F87335/F87535  
Tip to be placed in the receptacle preparation for  
sinus membrane elevation by crestal approach.



**NEW**



CS1

CS2

CS3

CS4

CS5

CS6

**Easy and  
controlled  
technique**

## Crest Splitting Kit

### CREST SPLITTING

The increasing tips thickness allows a smooth crest expansion limiting the risk of bone fracture.

CS1, CS2, CS3,  
CS4, CS5, CS6

CS II Kit:  
Ref. F87567

CS II Pack:  
Ref. F87560

Available for:



### OSTEOTOMY

CS1 - Ref. F87561  
*Fine tip dedicated to pilot osteotomy up to 8 mm of depth.*

CS2 - Ref. F87562  
*Tip dedicated to the second osteotomy up to 8 mm of depth.*

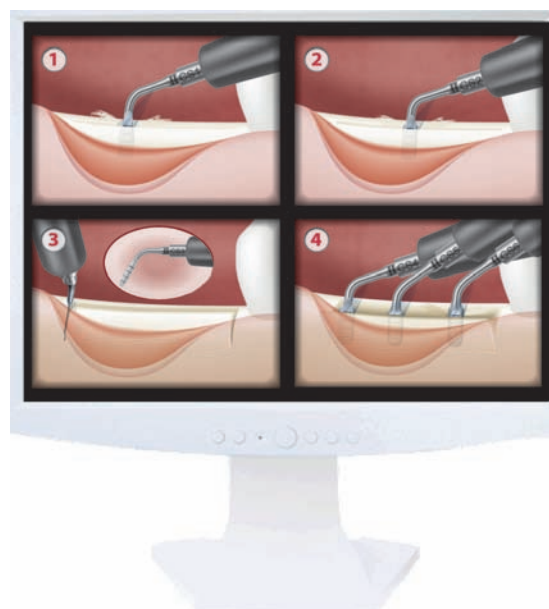
CS3 - Ref. F87563  
*Scalpel used for the discharges incisions in mesial and distal sides, up to 8 mm of depth.*

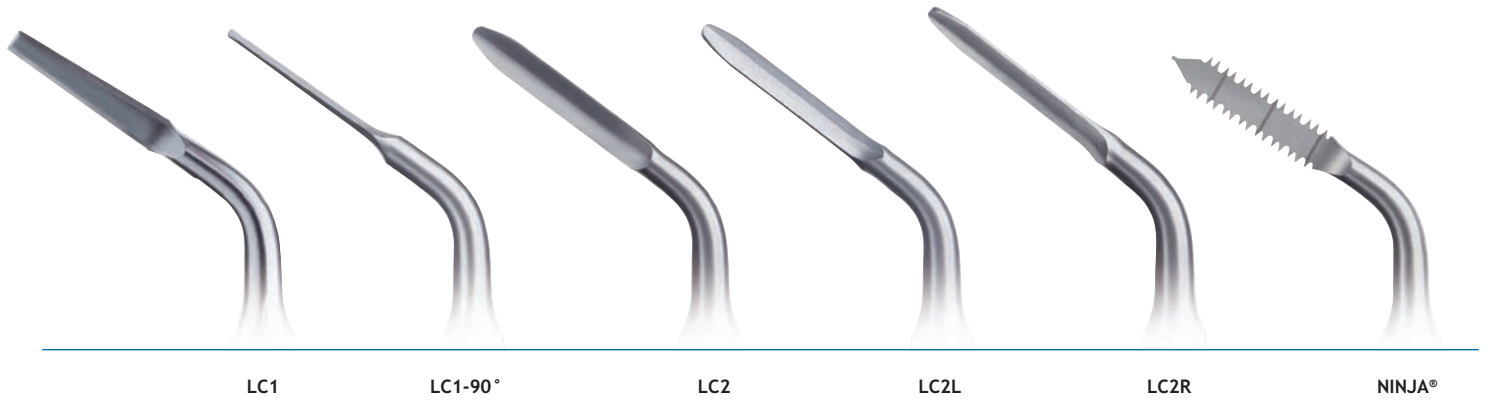
### EXPANSION

CS4 - Ref. F87564  
*Conical tip for bone expansion.  
Tip thickness: 1.80 mm at 8 mm.*

CS5 - Ref. F87565  
*Conical tip for bone expansion.  
Tip thickness: 2.75 mm at 8 mm.*

CS6 - Ref. F87566  
*Conical tip for bone expansion.  
Tip thickness: 3.75 mm at 8 mm.*





For  
atraumatic  
extractions  
without  
bone  
destruction

LC1, LC1-90°, LC2, LC2L,  
LC2R, Ninja

Extraction Kit:  
Ref. [F87346](#)/F87546

Extraction Pack:  
Ref. [F87340](#)/F87540

## Extraction Kit

### WIDENING THE LIGAMENTARY SPACE

LC tips separate the tooth from its attachment system for a rapid extraction, with less luxation, keeping intact the alveolar bone edge. Surgeries: extraction of wisdom teeth, fractured roots, impacted teeth, etc.

### SYNDESMOTOMY: ANTERIOR AREA

LC1 - Ref. [F87307](#)/F87507  
*Ultrasonic periosteum intended for syndesmotomy and periradicular osteotomy.*

LC2 - Ref. [F87342](#)/F87542  
*Tip, particularly slim, allows access to the tight spaces between the root and the alveolar bone.*

### SYNDESMOTOMY: POSTERIOR AREA

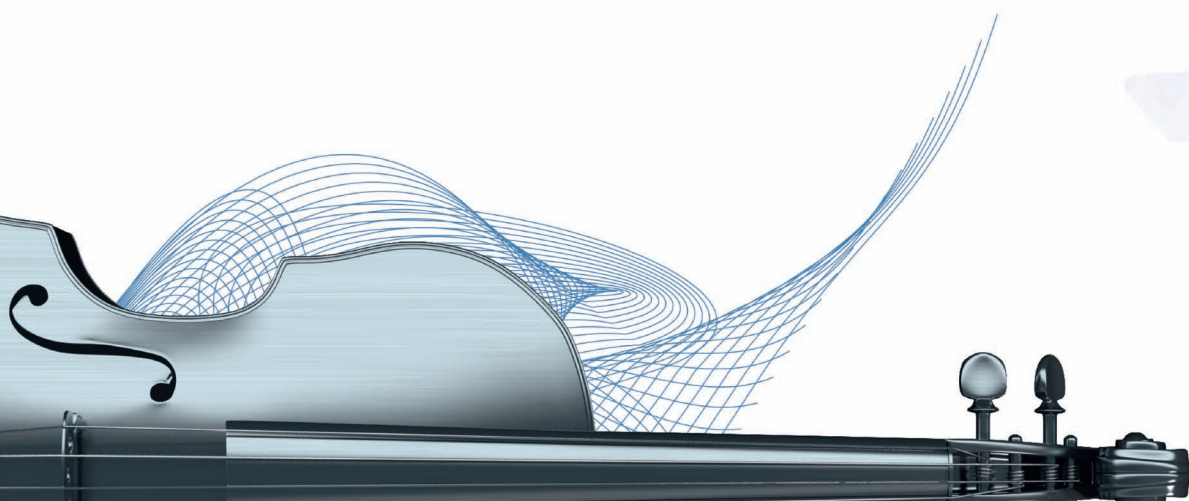
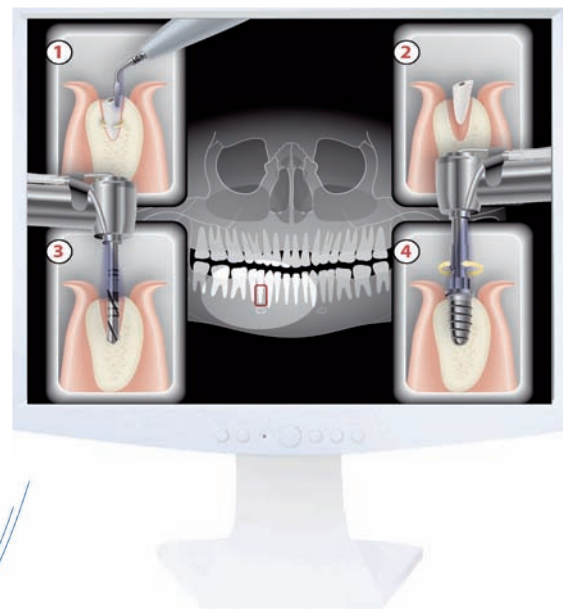
LC1-90° - Ref. [F87341](#)/F87541  
*Periosteum facilitates widening of the periodontal space in the interproximal, lingual and distal areas of molars.*

LC2L - Ref. [F87343](#)/F87543  
*Left-oriented at 45° tip facilitates access to the posterior areas.*

LC2R - Ref. [F87344](#)/F87544  
*Right-oriented at 45° tip facilitates access to the posterior areas.*

### ROOT SECTION

Ninja - Ref. [F87345](#)/F87545  
*Saw-tooth tip particularly efficient for hemisections and root amputations.*





BS6



CE1



CE2



CE3

**Precision & Accessibility**

**Crown Extension Kit**

**CROWN LENGTHENING**

Completely innocuous to the gingiva guaranteeing the integrity of bone and adjacent teeth.

BS6, CE1, CE2, CE3

CE Kit:

Ref. F87354/F87554

CE Pack:

Ref. F87350/F87550

**OSTEOPLASTY**

BS6 - Ref. F87306/F87506  
Curved scalpel particularly effective for substantial osseous reshaping.

CE1 - Ref. F87351/F87551  
Diamond-coated spherical tip (Ø 1.75 mm) designed for osteoplasty in oral and palatal zones.

CE2 - Ref. F87352/F87552  
Diamond-coated spherical tip (Ø 1.20 mm) designed for osteoplasty in interproximal zones.

**OSTEOECTOMY**

CE3 - Ref. F87353/F87553  
For a fast restoration of the biologic width (laser mark placed at 3 mm).

Used perpendicularly or parallel to the bone, this tip is designed for osteotomies of the tooth-supporting bone in interproximal and oral (vestibular) and palatal periradicular zones.



# THE SATELEC GENERATOR\*, THE HANDPIECE, THE TIP AND... THE SURGEON ARE PERFECTLY IN TUNE

**PIEZOTOME**  
Piezo • Ultrasonic • Surgery • Unit

**IMPLANTCENTER**  
Piezo • Ultrasonic • Surgery & Implantology Unit

**PIEZOTOME**  
Piezo • Ultrasonic • Surgery • Unit  
SOLO





**PIEZOTOME**  
Piezo • Ultrasonic • Surgery • Unit



**ALL SATELEC® SURGICAL GENERATORS  
CAN BE VIEWED ON [PIEZOTOME.COM](http://PIEZOTOME.COM)  
WEBSITE**



\*GENERATORS AVAILABLE DEPENDING ON COMMERCIAL OFFERS

PUBLICITIS ACTIV - RCS PARIS 337 944 483 - 021176 No contractual document - 00611-V2-VI - Copyright © 2011 SATELEC. All rights reserved. No information or part of this document may be reproduced or transmitted in any form without the prior permission of SATELEC.

